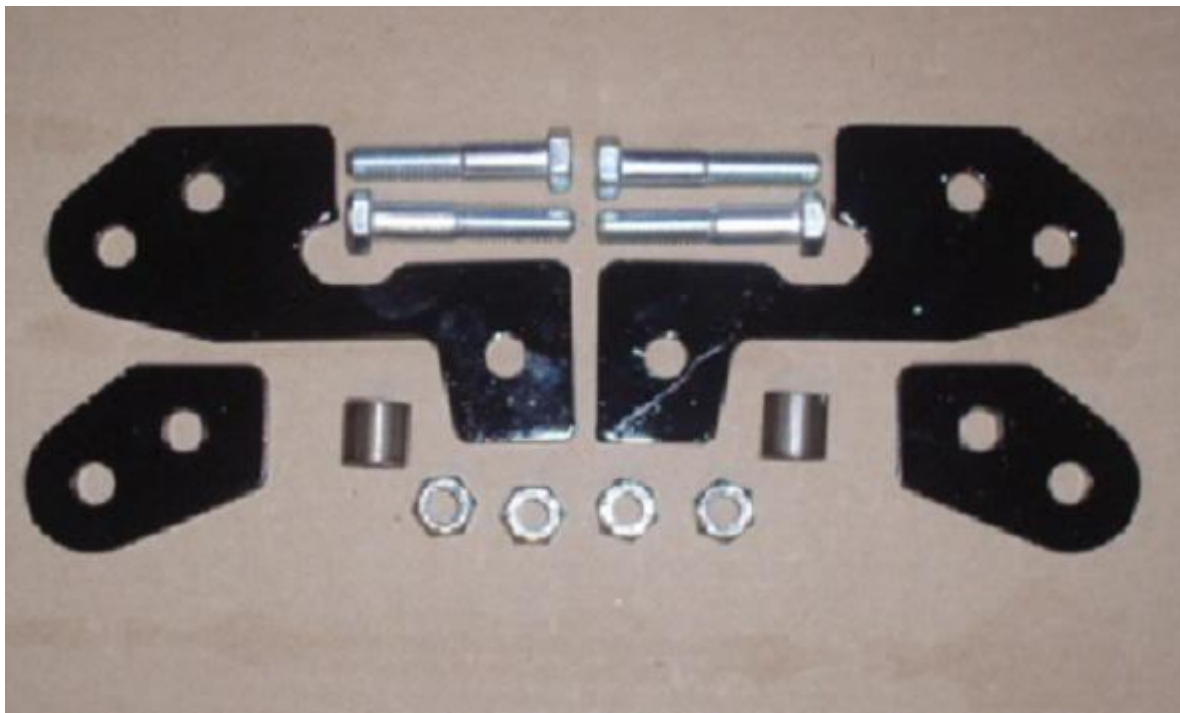


## 2009 and Newer Arctic Cat Lift Kit Installation

### FRONT LIFT KIT



### REAR LIFT KIT



## FRONT LIFT INSTRUCTIONS!

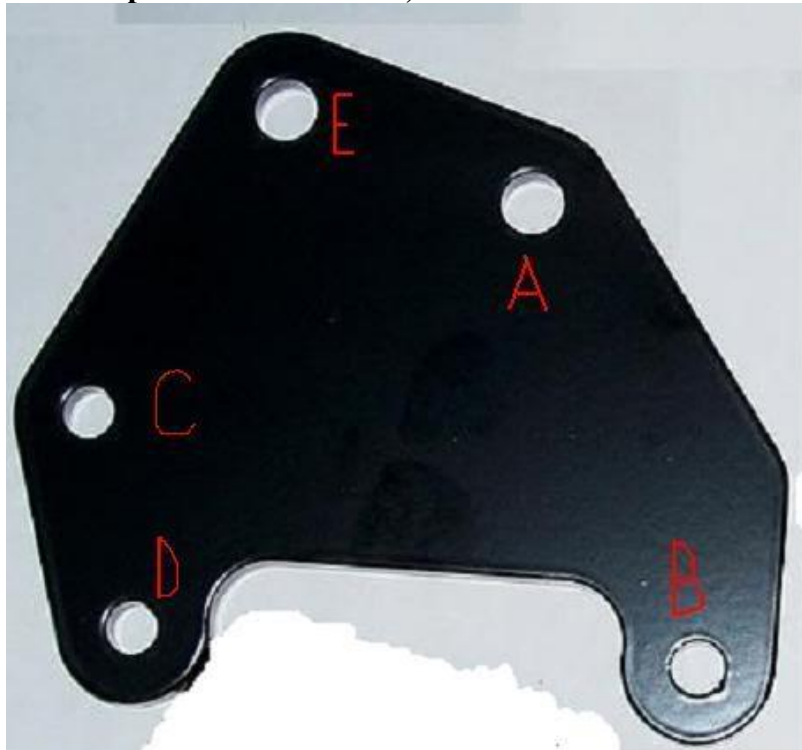
***NOTE: Your 2009 front lift kit is not exactly as pictured here, BUT it all goes together the exact same way as pictured with this TRV front lift kit.***

Lift up the ATV with an ATV jack of some sort and remove the front wheels.

Remove the lower shock mounting bolt and let the a-arm drop down so you can start putting in the lift kit.



Slide a 3/8" x 2" bolt through one of the lift plates pointing towards the back of the machine, through hole "A", then slide the bolt through the stock shock mounting bracket, and through the aluminum spacer provided. Place the other lift plate using the same hole "A" on the threads of that bolt and put a nut on the bolt, BUT ONLY PUT IT ON A COUPLE OF THREADS!



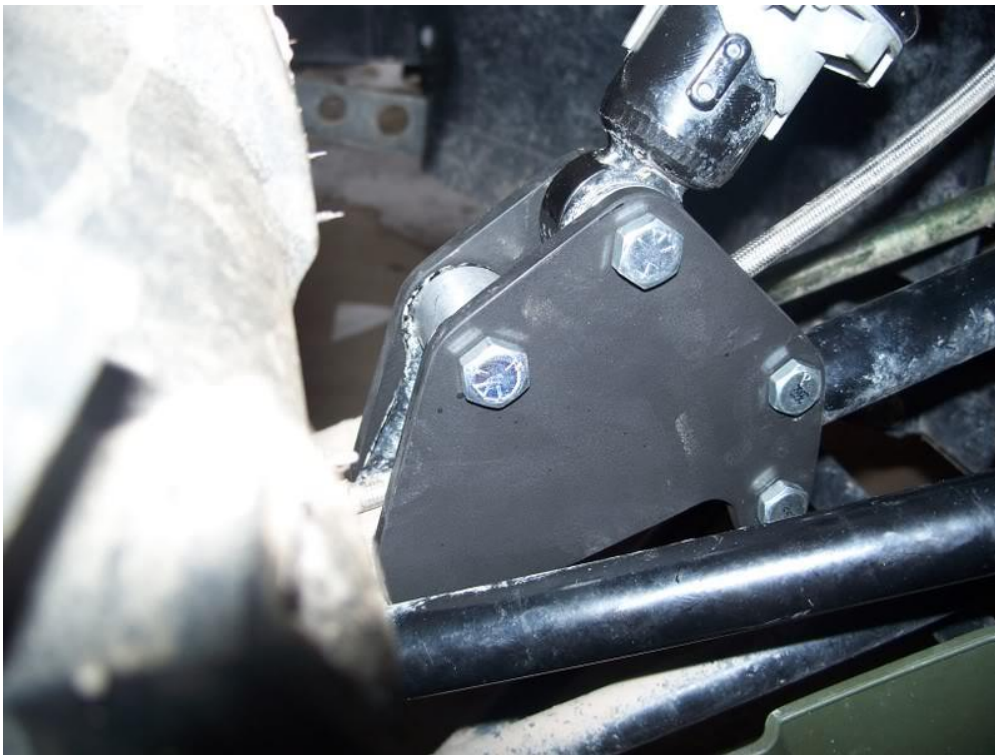
**Slide a 5/16" bolt through hole "B" of the front plate, and rotate the second plate into position so the bolt goes through the same hole on the second plate and put a nut on, AGAIN, ONLY PUT IT ON A COUPLE THREADS AT MOST!**

**Then repeat the process but putting a 5/16" bolt through holes "C" and "D", put the nuts on only a couple threads.**

**Now line the bottom end of the shock up between the 2 plates and start to slide a 3/8" bolt through hole "E" of the front plate, as it passes through the hole, place a washer on the bolt between the inside of the plate and the side of the shock knuckle. Continue to slide the bolt through the hole in the shock knuckle and use a second washer between the back side of the shock knuckle and the second plate. Finish sliding the bolt all the way through the second plate and put the nut on a couple threads.**

**Tighten the bolts, a little bit at a time on each bolt to make sure they all get threaded up onto the nylock portion of the nuts.**

**It should look like this on the lift side if you are facing the machine, but with the proper lift brackets**



## Rear Lift instructions!

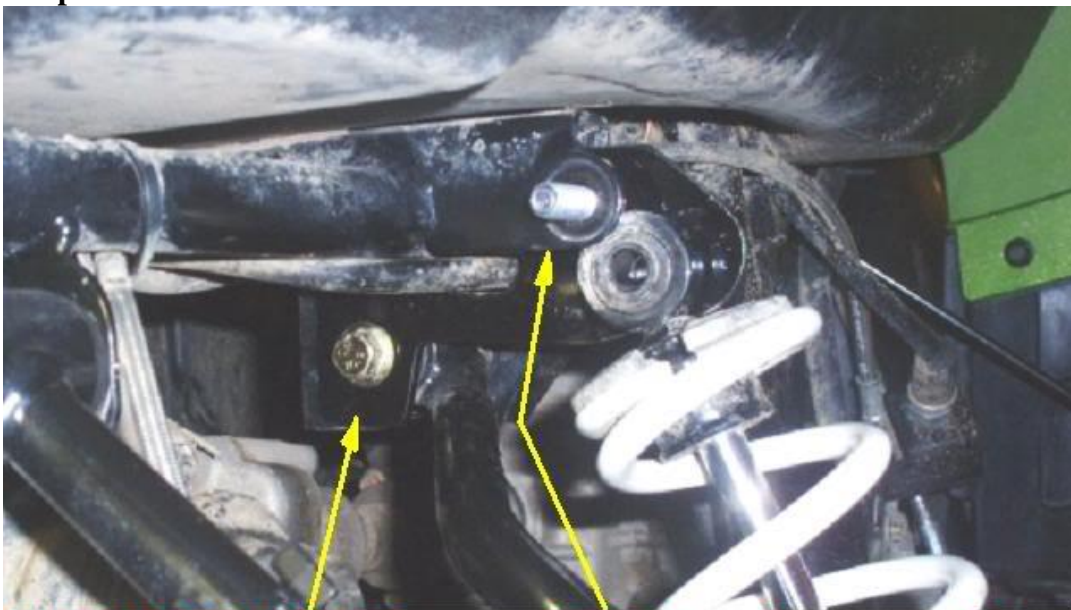
Lift the machine off the floor with some type of ATV lift and remove the back tires.  
Remove the top shock mounting bolt.



Remove the a-arm bolt closest to the front of the machine, it is lined up with the shock mounting bolt.

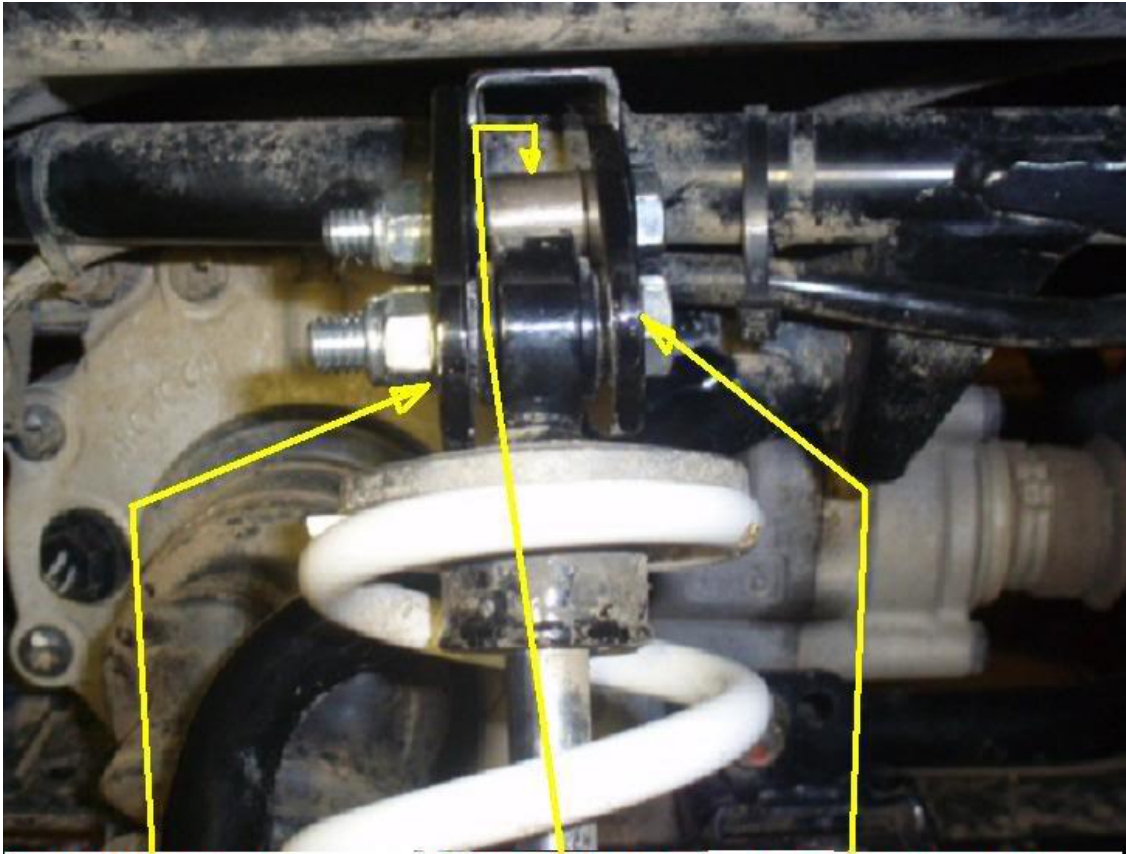


Use the a-arm bolt to secure the larger rear lift bracket in place, along with a 3/8" x 2" bolt through the stock shock mounting hole, **THE PLATE MUST BE INSIDE THE FRAME CHANNEL**, and also insert an aluminum bushing when you put in the first 3/8" bolt.  
See pictures below...



**A-Arm bolt used to secure the larger rear lift plate.**

**3/8" bolt used to secure plate in the stock shock mounting hole**

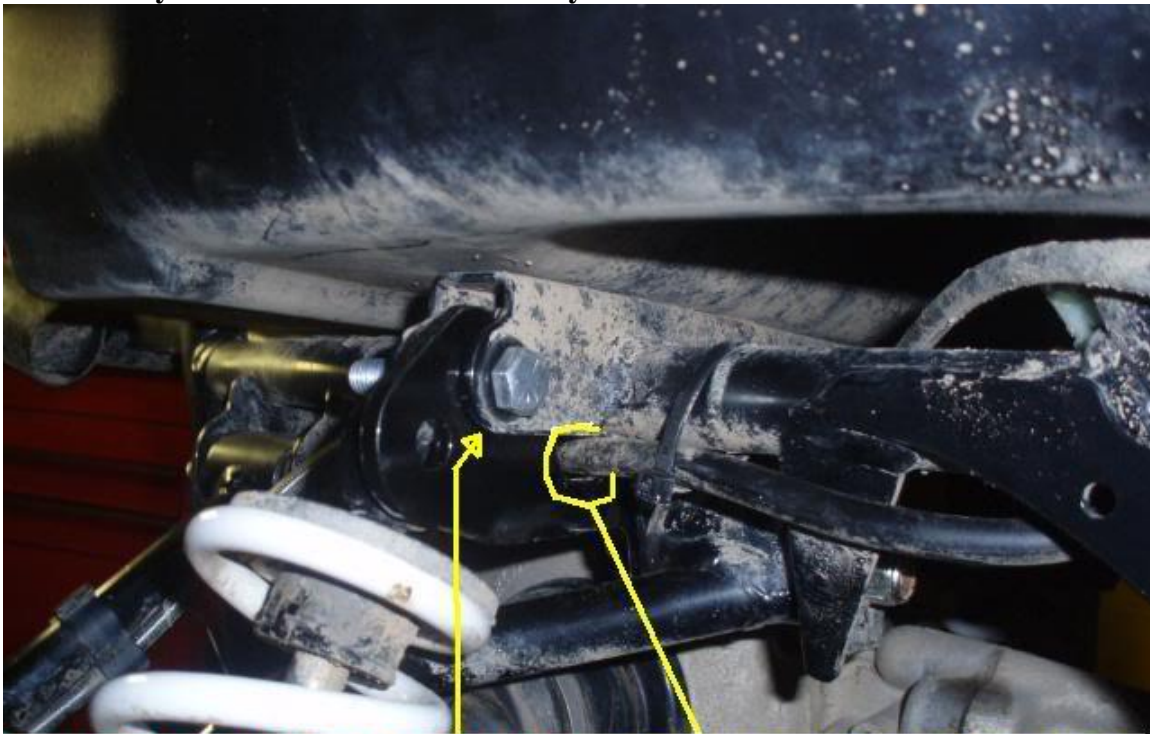


**Small plate outside the frame channel towards the rear**

**Aluminum bushing in the middle**

**Large plate inside the frame channel towards the front of the machine**

**Make sure you route the fuel line correctly.**



**Larger lift bracket goes inside the frame channel towards the side closest to the front of the machine**

**Fuel line gets routed through this cutout in the lift plate**

**When it's all put together, it should look like this**



